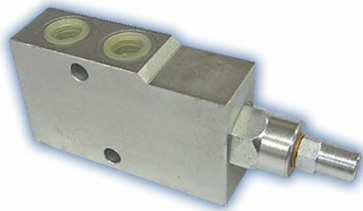


OVERCENTRE VALVES (PIPE MOUNTED)

STEEL - ZINC PLATED
SINGLE & DOUBLE ACTING
PILOT RATIO = 1:4.5 ▶ 1:5.5
MAX PRESSURE 350 BAR

| ORDER CODE | MAX (ltr/min) | A (mm) | H (mm) | F (mm) | E Ø(bsp) | W (mm) | W1 (mm) | W2 (mm) | S (mm) | D (mm) | D1 (mm) | PILOT RATIO |
|-------------|---------------|--------|--------|--------|----------|--------|---------|---------|--------|--------|---------|-------------|
| RPV2190A400 | 20 | 149 | 60 | 100 | 1/4" | 30 | 60 | 50 | 30 | 10 | 44 | 1:4.5 |
| RPV2190A600 | 40 | | | | 3/8" | | | | | | | |
| RPV2190A800 | 60 | | | | 1/2" | | | | | | | |
| RPV2190A120 | 95 | 192 | 80 | 127 | 3/4" | 45 | 85 | 62.5 | 35 | | | 1:5.5 |



SINGLE ACTING TYPE (RPV2190)

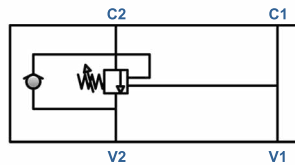


DOUBLE ACTING TYPE (RPV2290)

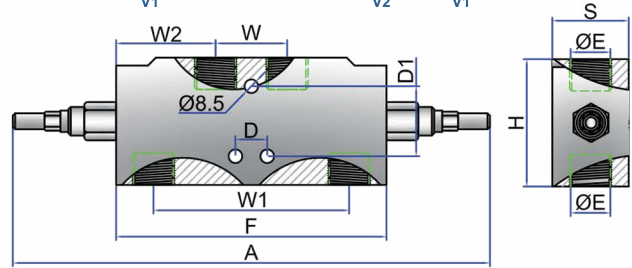
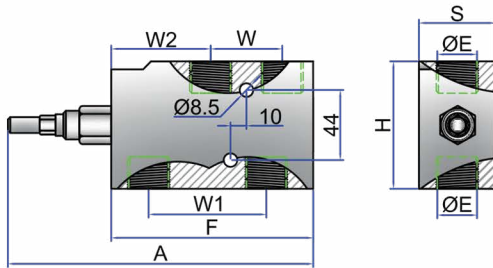
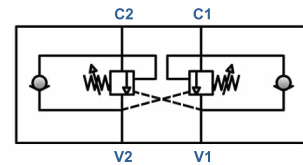
| ORDER CODE | MAX (ltr/min) | A (mm) | H (mm) | F (mm) | E Ø(bsp) | W (mm) | W1 (mm) | W2 (mm) | S (mm) | D (mm) | D1 (mm) | PILOT RATIO |
|-------------|---------------|--------|--------|--------|----------|--------|---------|---------|--------|--------|---------|-------------|
| RPV2290A400 | 20 | 248 | 60 | 150 | 1/4" | 50 | 110 | 50 | 30 | 30 | 44 | 1:4.5 |
| RPV2290A600 | 40 | | | | 3/8" | | | | | | | |
| RPV2290A800 | 60 | | | | 1/2" | | | | | | | |
| RPV2290A120 | 95 | 320 | 80 | 190 | 3/4" | 65 | 143 | 62.5 | 35 | 44 | 64 | 1:5.5 |

PLEASE NOTE: V1 / C1 PORTS = OIL FEED / RETURN
V2 / C2 PORTS = RAM FEED / RETURN

SINGLE ACTING TYPE
(REFER TO UPPER TABLE)



DOUBLE ACTING TYPE
(REFER TO LOWER TABLE)

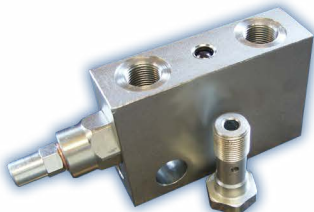


OVERCENTRE VALVES - PORT MOUNTED

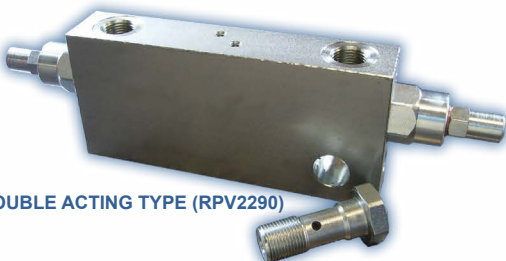
STEEL - ZINC PLATED
SINGLE & DOUBLE ACTING
PILOT RATIO = 1:4.5
MAX PRESSURE 350 BAR

| ORDER CODE | MAX (ltr/min) | A (mm) | H (mm) | F (mm) | E Ø(bsp) | W (mm) | W1 (mm) | W2 (mm) | W3 (mm) | S (mm) | PILOT RATIO |
|-------------|---------------|--------|--------|--------|----------|--------|---------|---------|---------|--------|-------------|
| RPV21900392 | 40 | 150 | 60 | 100 | 3/8" | 60 | 15 | 50 | 20 | 30 | 1:4.5 |
| RPV21900412 | 60 | | | | 47 | | | | | | |
| RPV22900422 | 40 | 250 | 70 | 150 | 3/8" | 110 | 12.5 | 100 | 20 | 30 | 1:4.5 |
| RPV22900432 | 60 | | 80 | | 1/2" | | 18 | | | | |

PLEASE NOTE: V1 / C1 PORTS = OIL FEED / RETURN
V2 / C2 PORTS = RAM FEED / RETURN

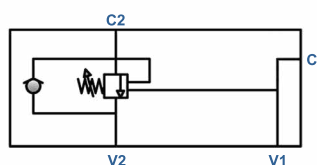


SINGLE ACTING TYPE (RPV2190)



DOUBLE ACTING TYPE (RPV2290)

SINGLE ACTING TYPE
(REFER TO UPPER TABLE)



DOUBLE ACTING TYPE
(REFER TO LOWER TABLE)

