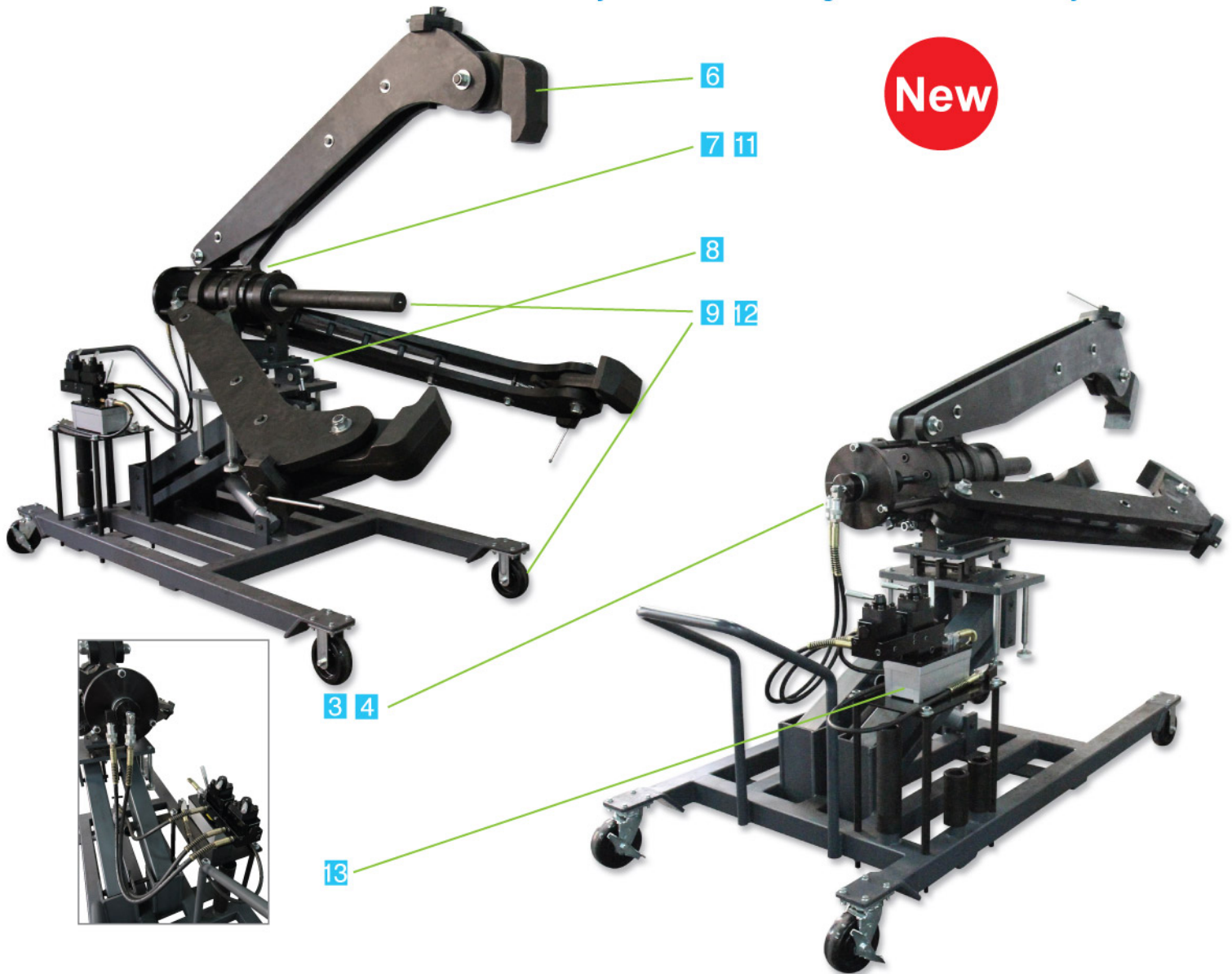


New

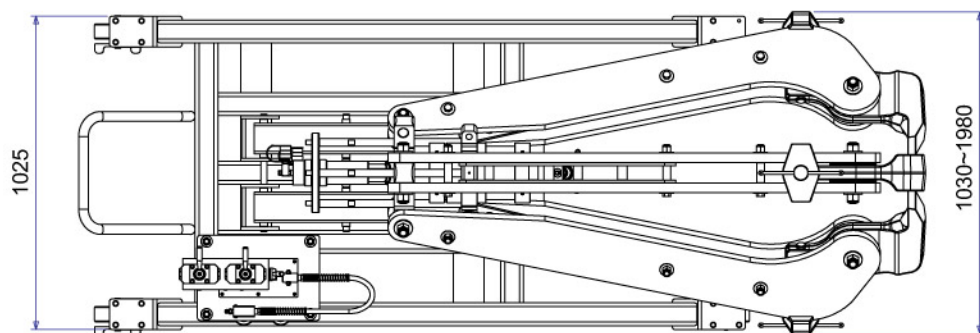


FEATURES:

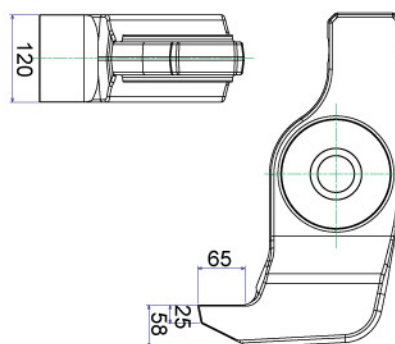
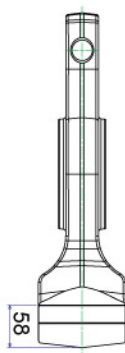
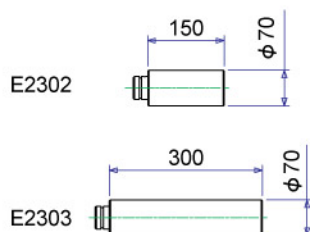
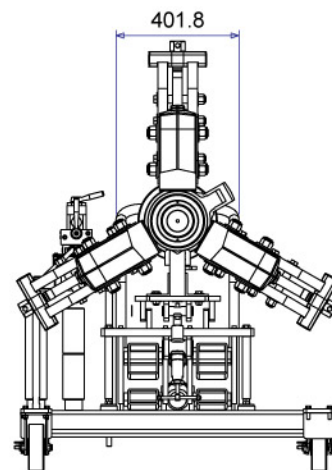
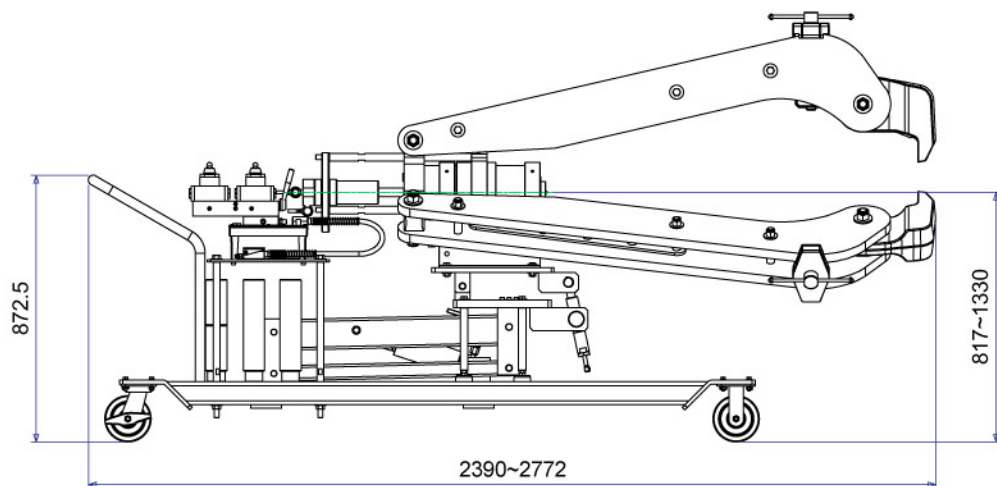
- 1 Foot operating Air/ Hydraulic lift system for easy and precise position of puller section.
- 2 Flow metering system provides the constant lowering speed of puller.
- 3 Double acting hydraulic system for holding, opening & closing jaws ; also provide a safe, secure grip on work object always.
- 4 Self-centering design keeps puller jaws clamp work object evenly and automatically.
- 5 Electrical Hydraulic Pump advances and retracts the pushing cylinder only to prevent operating errors from happening.
- 6 The easy jaw head adjusting system prevents puller jaws from sliding and/or spring off the work object being pulled always.
- 7 Puller can be assembled in 2 or 3-WAY configurations.
- 8 Puller can be adjusted with 5 degree to up or down of puller centerline for precisely positioning.
- 9 Carts swivel casters provide movement of cart easily.
- 10 Electrical Hydraulic Pump is two stage version ; the low pressure stage provides the fast stroking to save time ; the high pressure stage is controlled by remote hand switch.
- 11 100 Ton Cylinder is single-acting, spring type with a maximum working pressure of 10,000 psi.
- 12 Three extensions are standard attachments for the needs on extra stroke.
- 13 Control Panel System for easily and efficiently operating.(Equipment on requesting)

*** This model is patented in Taiwan & Germany, and patent pending in USA & PRC.**

POWERAM 100 TON EASY PULLER



Model No.: PME100T
 Cylinder Stroke: 270mm
 Capacity: 100 Ton
 Min. Spread: 300mm
 Max. Spread: 1500mm
 Reach at Min. Spread: 952mm
 Reach at Max. Spread: 1220mm



EXTENSIONS & JAW TIP

Part No.	Dia. (mm)	Length (mm)	Qty (pc)	Jaw Tip Dimensions (mm)
E2302	70	150	2	Tip Depth: 65 Tip Clearance: 25 - 58 Tip Width: 120
E2303		300	2	

SPECIFICATIONS

Model No.	Reach (Max/mm)	Spread (Max/mm)	Stroke (mm)	Overall Dimensions (mm)	Power Sources	Weight (kgs)
PME100T	1220	1500	270	1030x2772x1334	- - -	1083
PME100TE*	1220	1500	270	1030x2772x1334	220V/50Hz	1100

* This model is equipped with Electric Pump - EP211S.

ELECTRIC PUMP - Specifications

Model No.	Acting	Reservoir Size (c.c.)	Function	Motor	Oil Del. (c.c. / min. @)			
					0 psi	100 psi	5000 psi	10000 psi
EP211S	Single	11000	Adv./Hold/Retract	1/2 HP Single Phase 220V, 50/60 Hz	8200	7400	840	650