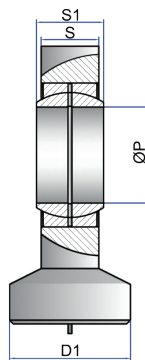
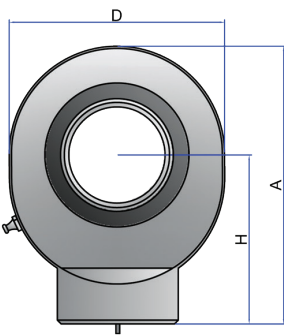


WELD ON ENDS - TS...C SERIES

INSERT PLAIN BEARING TYPE 'SR'
ISO12240-4 - SERIES E TYPE S
FITTED WITH GREASE NIPPLE
STEEL / STEEL COUPLING

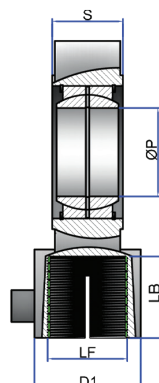
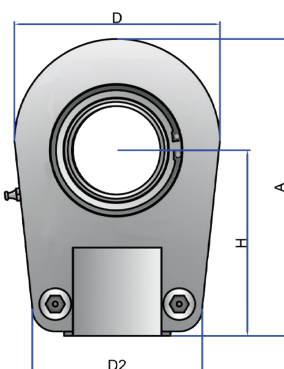


* = LUBRICATION VIA GREASING HOLE.
(1) = NON-LUBRICATABLE.

ORDER CODE	P Ø(mm)	D (mm)	A (mm)	S (mm)	H (mm)	S1 (mm)	D1 (mm)	DYNAMIC LOAD (kn)	STATIC LOAD (kn)
TS10C(1)	10	29	38.5	7	24	9	15	8.15	15.6
TS12C(1)	12	34	44	8	27	10	17.5	10.8	21.6
TS15C*	15	40	51	10	31	12	21	17	32
TS16C*	16	46	58	11	35	14	24	19	36
TS17C*	17	46	58	11	35	14	24	21.2	40
TS20C*	20	53	64.5	13	38	16	27.5	30	54
TS25C	25	64	77	17	45	20	33.5	48	72
TS30C	30	73	87.5	19	51	22	40	62	95
TS35C	35	82	102	21	61	25	47	80	125
TS40C	40	92	115	23	69	28	52	100	156
TS45C	45	102	128	27	77	32	58	127	208
TS50C	50	112	144	30	88	35	62	156	250
TS60C	60	135	167.5	38	100	44	70	245	390
TS70C	70	160	195	42	115	49	80	315	510
TS80C	80	180	231	47	141	55	95	400	620

THREADED ENDS - TAPR...U SERIES

INSERT PLAIN BEARING TYPE 'SR'
ISO12240-1 - SERIES E
FITTED WITH GREASE NIPPLE
STEEL / STEEL COUPLING



* = MATERIAL: NODULAR CAST IRON.

ORDER CODE	P Ø(mm)	D (mm)	A (mm)	S (mm)	H (mm)	D1 (mm)	D2 (mm)	LF (mm)	LB (mm)	DYNAMIC LOAD (kn)	STATIC LOAD (kn)
TAPR20U	20	56	80	19	50	25	46	16 x 1.5	17	30	81
TAPR25U	25	56	80	23	50	25	46	16 x 1.5	17	48	72
TAPR30U	30	64	94	28	60	32	50	22 x 1.5	23	62	106
TAPR35U	35	78	112	30	70	40	66	28 x 1.5	29	80	153
TAPR40U	40	94	135	35	85	49	76	35 x 1.5	36	100	250
TAPR50U	50	116	168	40	105	61	90	45 x 1.5	46	156	365
TAPR60U	60	130	200	50	130	75	120	58 x 1.5	59	245	400
TAPR70U	70	154	232	55	150	86	130	65 x 1.5	66	315	540
TAPR80U	80	176	265	60	170	105	160	80 x 2	81	400	670
TAPR90U*	90	206	322	65	210	124	180	100 x 2	101	490	980
TAPR100U*	100	231	360	70	235	138	200	110 x 2	111	610	1120
TAPR110U*	110	266	407.5	80	265	152	220	120 x 3	125	655	1700
TAPR120U*	120	340	490	90	310	172	257	130 x 3	135	950	2900