

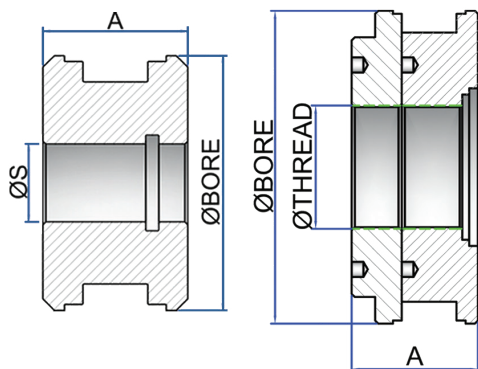
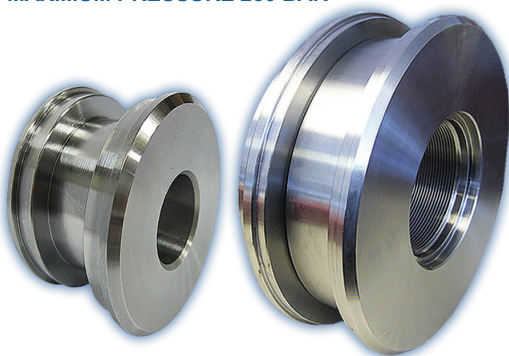
PISTONS (FOR STANDARD RODS)

STEEL - 9SMN28 & UNI-C40

ALUMINIUM - UNI2011-11S

SINGLE & DOUBLE ACTING APPLICATION

MAXIMUM PRESSURE 250 BAR



ORDER CODE	BORE Ø(mm)	S Ø(mm)	A (mm)
RP147*	25	10 x 1.5	25
RP148*	30	13	24.7
RP149A	32	13	30
RP149	32	15	30
RP150	35	15	40
RP151	40	15	40
RP152	45	15	40
RP152A	50	15	40
RP153	50	20	40
RP154	55	20	40
RP155	60	20	50
RP155A	60	24	45
RP155B	60	27	50
RP155C	63	20	50
RP155D	63	24	45
RP156	65	20	50
RP156A	65	24	45
RP157	70	20	50
RP157A	70	24	45
RP157B	70	27	50

ORDER CODE	BORE Ø(mm)	S Ø(mm)	A (mm)
RP158A	75	24	45
RP158B	75	27	50
RP159	80	24	45
RP159A	80	27	50
RP160	85	24	45
RP160A	85	27	50
RP161	90	27	50
RP161A	90	33	50
RP162	100	27	50
RP162A	100	33	50
RP162B	110	33	50
RP162C	110	40	50
RP163	120	40	50
RP164	125	40	50
RP164A	140	40	58
RP165	150	40	58
RP166	160	51	58
RPCT1180080**	180	80 x 2	82
RPCT11200080**	200	80 x 2	82
RPCT11250080**	250	98 x 2	82

PLEASE NOTE: WHEN CHOOSING A ROD ASSEMBLY MATCH THE PISTON USING DIMENSION 'S' WITH THE ROD DIMENSION 'C' ON PAGES 129 ▶ 132.

THREADED PISTONS ARE **NOT** SUITABLE FOR USE WITH STANDARD RAMPARTS® RODS.

* = ALUMINIUM UNI 2011-11S

** = UNI-C40 (2 PIECE THREADED 'RPCT' PISTON)

PLEASE GO TO PAGE 148 FOR LOCK NUTS.

THREADED PISTONS

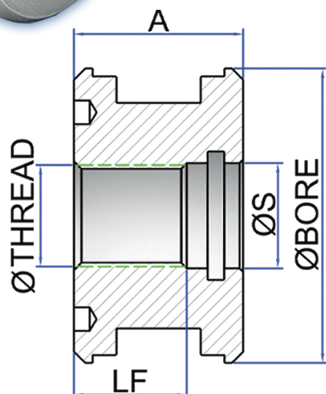
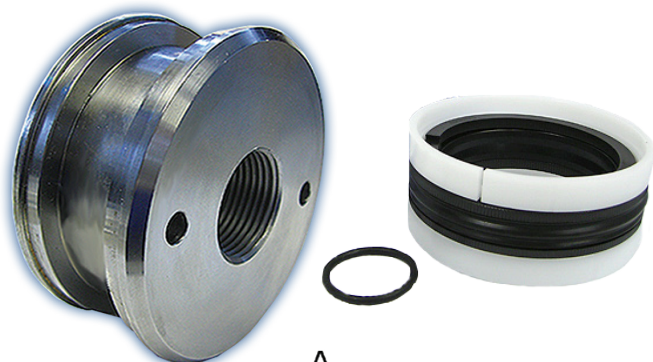
MILD STEEL - 9SMN28

ALUMINIUM - UNI2011-11S

COMPLETE WITH SEALS

SINGLE & DOUBLE ACTING APPLICATION

MAXIMUM PRESSURE 250 BAR



ORDER CODE	BORE Ø(mm)	S Ø(mm)	A (mm)	LF (mm)	THREAD Ø(mm)
RPCTF040	40	17	40	30	16 x 1.5
RPCTF050	50	21	40	28	20 x 1.5
RPCTF060	60	25	45	30	24 x 2
RPCTF063	63	25	45	30	24 x 2
RPCTF070	70	25	45	30	24 x 2
RPCTF080	80	28	45	30	27 x 2
RPCTF090	90	35	50	35	33 x 2
RPCTF100	100	35	50	35	33 x 2
RPCTF 110	110	42	50	35	39 x 3
RPCTF120	120	45	50	35	42 x 3
RPCTF125	125	45	50	35	42 x 3
RPCTF140	140	51	58	40	48 x 3
RPCTF150	150	51	58	40	48 x 3
RPCTF160	160	54	58	40	52 x 3
RPCTBF030*(1)	30	13	25	17	12 x 1.5
RPCTBF032*	32	13	27	19	12 x 1.5
RPCTBF035*	35	13	27	19	12 x 1.5
RPCTBF040*	40	17	27	19	16 x 1.5
RPCTBF045*	45	17	30	21	16 x 1.5
RPCTBF050*	50	21	30	21	20 x 1.5
RPCTBF055*	55	21	35	24	20 x 1.5
RPCTBF060*	60	25	35	24	24 x 2
RPCTBF063*	63	25	35	24	24 x 2
RPCTBF065*	65	25	35	24	24 x 2
RPCTBF070*	70	25	35	24	24 x 2
RPCTBF075*	75	28	35	24	27 x 2
RPCTBF080*	80	28	40	26	27 x 2
RPCTBF085*	85	28	40	26	27 x 2
RPCTBF090*	90	35	40	26	33 x 2
RPCTBF100*	100	35	40	26	33 x 2

PLEASE NOTE: THREADED PISTONS ARE **NOT** SUITABLE FOR USE WITH STANDARD RAMPARTS® RODS.

(1) = ALUMINIUM UNI 2011-11S

* = SHORT THREADED VERSION