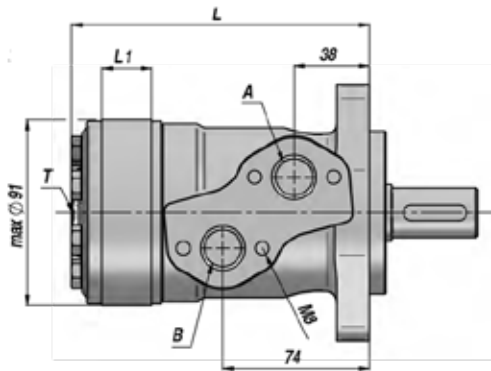
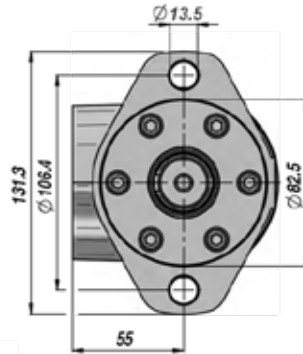
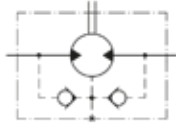


# MAP HYDRAULIC MOTORS

MAP SERIES - (GEROTOR)  
 SHAFT Ø25mm  
 SAE 'A' 2 BOLT TYPE FLANGE  
 BUILT IN CHECK VALVES  
 WITH DRAIN LINE



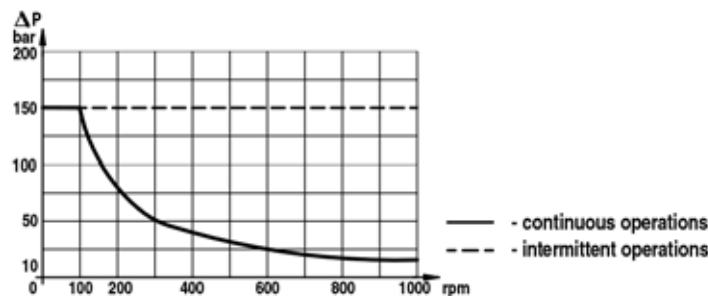
GEROTOR MOTOR



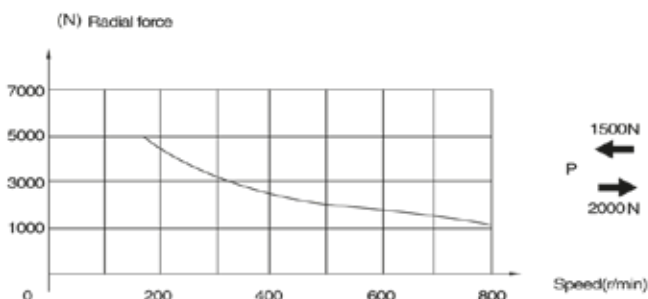
ORDER CODE	DISPLACEMENT (c.c / rev)	MAXIMUM SPEED (rpm)	MAXIMUM OIL FLOW (ltr / min)	MAXIMUM TORQUE (Nm)	MAX PRESSURE INLET (Bar)	MAXIMUM PRESSURE DROP (Bar)	A - B (Bsp)	T (Bsp)	L (mm)	L1 (mm)	WEIGHT Kg
MAP050	52.9	800	40	78	165	140	1/2"	1/4"	141	7	5.6
MAP080	79.3	770	60	120					145	11	5.7
MAP100	98.2	615		149					147	13	5.9
MAP125	120.9	480		180					150	16	6
MAP160	158.7	385		219					155	21	6.2
MAP200	196.4	310		262					160	26	6.4
MAP250	241.8	250		300					166	32	6.6
MAP315	317.3	195		338					176	42	6.9
MAP400	392.9	155		334					186	52	7.4

\* WITH DRAIN CONNECTION FITTED.  
 TABLE ABOVE SHOWS CONTINUOUS WORK SPECIFICATIONS.

## MAX RETURN PRESSURE WITHOUT DRAIN



## PERMISSIBLE SHAFT LOADS



## DIRECTION OF SHAFT ROTATION

