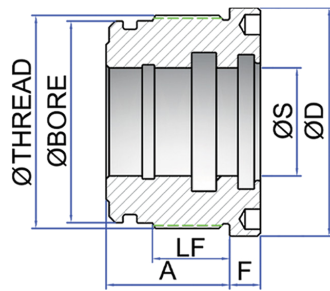


STANDARD HEAD BUSH / GLANDS



CAST IRON - EN-GJL 250 (G25-UNI 5007/EN 1561)
 SINGLE & DOUBLE ACTING APPLICATION
 MAXIMUM PRESSURE 250 BAR (20mm BORE = 200 BAR)
 SEALS SUPPLIED SEPARATELY
 SEAL KIT ORDER CODE ADD **SK** AFTER THE RP
EXAMPLE: RPSK131B

ORDER CODE	BORE Ø(mm)	S Ø(mm)	D (MAX) Ø(mm)	F (mm)	THREAD Ø(mm)	LF (mm)	A (mm)
RP2012**	20	12	30	13	26 x 1.5	11	19
RP2015**	20	15	30	13	26 x 1.5	11	19
RP2016**	20	16	30	13	26 x 1.5	11	19
RP127*	25	16	35	18	28 x 1.5	12	-
RP128*	30	16	40	6	34 x 1.5	15	27
NEW! RP128B	30	20	40	6	34 x 1.5	15	27
RP128A*	32	16	42	6	36 x 1.5	15	27
NEW! RP128C	32	18	42	6	36 x 1.5	15	27
RP129	32	20	42	6	36 x 1.5	15	27
RP130	35	20	45	8	39 x 1.5	19	32
RP130A	35	22	45	8	39 x 1.5	19	32
NEW! RP131D	40	18	50	8	44 x 1.5	19	32
RP131	40	20	50	8	44 x 1.5	19	32
RP131A	40	22	50	8	44 x 1.5	19	32
RP131B	40	25	50	8	44 x 1.5	19	32
RP131C	40	28	50	8	44 x 1.5	19	32
NEW! RP132B	45	20	55	8	49 x 1.5	19	32
RP132	45	22	55	8	49 x 1.5	19	32
RP132A	45	25	55	8	49 x 1.5	19	32
RP133C	50	20	60	8	54 x 1.5	22	35
RP133	50	25	60	8	54 x 1.5	22	35
RP133F	50	28	60	8	54 x 1.5	22	35
RP133A	50	30	60	8	54 x 1.5	22	35
RP133E	50	32	60	8	54 x 1.5	22	35
RP133B	50	35	60	8	54 x 1.5	22	35
NEW! RP133G	50	36	60	8	54 x 1.5	22	35
RP133D	55	25	65	8	60 x 1.5	21	35
RP134	55	30	65	8	60 x 1.5	21	35
RP134A	55	35	65	8	60 x 1.5	21	35
RP134B	60	25	70	10	64 x 1.5	27	40
RP135	60	30	70	10	64 x 1.5	27	40
NEW! RP135K	60	32	70	10	64 x 1.5	27	40
RP135A	60	35	70	10	64 x 1.5	27	40
RP135B	60	40	70	10	64 x 1.5	27	40
RP135H	60	45	70	10	64 x 1.5	27	40
RP135C	63	30	73	10	68 x 1.5	25	40
RP135F	63	32	73	10	68 x 1.5	25	40
RP135D	63	35	73	10	68 x 1.5	25	40
RP135G	63	36	73	10	68 x 1.5	25	40
RP135E	63	40	73	10	68 x 1.5	25	40
RP135J	63	45	73	10	68 x 1.5	25	40
NEW! RP136E	65	25	75	10	68 x 1.5	25	40
RP136	65	30	75	10	69 x 1.5	25	40
RP136A	65	35	75	10	69 x 1.5	25	40
RP136B	65	40	75	10	69 x 1.5	25	40
RP136F	65	45	75	10	69 x 1.5	25	40
RP137E	70	25	80	10	74 x 1.5	27	40
RP137	70	30	80	10	74 x 1.5	27	40
NEW! RP137F	70	32	80	10	70 x 1.5	27	40
RP137A	70	35	80	10	74 x 1.5	27	40
NEW! RP137G	70	36	80	10	74 x 1.5	27	40
RP137B	70	40	80	10	74 x 1.5	27	40

ORDER CODE	BORE Ø(mm)	S Ø(mm)	D (MAX) Ø(mm)	F (mm)	THREAD Ø(mm)	LF (mm)	A (mm)
RP137D	70	45	80	10	74 x 1.5	27	40
RP137C	70	50	80	10	74 x 1.5	27	40
RP138	75	30	90	10	80 x 2	33	50
RP138A	75	35	90	10	80 x 2	33	50
RP138B	75	40	90	10	80 x 2	33	50
RP138C	75	45	90	10	80 x 2	33	50
RP139E	80	30	95	10	85 x 2	33	50
RP139	80	35	95	10	85 x 2	33	50
RP139A	80	40	95	10	85 x 2	33	50
RP139B	80	45	95	10	85 x 2	33	50
RP139C	80	50	95	10	85 x 2	33	50
RP139F	80	55	95	10	85 x 2	33	50
RP139D	80	60	95	10	85 x 2	33	50
RP140	85	35	100	10	90 x 2	33	50
RP140A	85	40	100	10	90 x 2	33	50
RP140B	85	45	100	10	90 x 2	33	50
RP140C	85	50	100	10	90 x 2	33	50
RP141	90	40	105	10	95 x 2	33	50
RP141A	90	45	105	10	95 x 2	33	50
RP141B	90	50	105	10	95 x 2	33	50
NEW! RP141D	90	55	105	10	95 x 2	33	50
RP141C	90	60	105	10	95 x 2	33	50
RP142	100	40	115	12	105 x 2	51	70
RP142A	100	45	115	12	105 x 2	51	70
RP142B	100	50	115	12	105 x 2	51	70
RP142C	100	60	115	12	105 x 2	51	70
RP142J	100	63	115	12	105 x 2	51	70
RP142D	100	70	115	12	105 x 2	51	70
RP142E	110	45	125	12	115 x 2	41	60
RP142F	110	50	125	12	115 x 2	41	60
RP142G	110	60	125	12	115 x 2	51	70
RP142H	110	70	125	12	115 x 2	51	70
NEW! RP142L	110	80	125	12	115 x 2	51	70
RP143C	120	50	140	12	125 x 2	49	70
RP143	120	60	140	12	125 x 2	49	70
RP143A	120	70	140	12	125 x 2	49	70
RP143B	120	80	140	12	125 x 2	49	70
NEW! RP143D	120	90	140	12	125 x 2	49	70
RP144	125	60	145	12	130 x 2	59	80
NEW! RP144F	125	63	145	12	130 x 2	59	80
RP144A	125	70	145	12	130 x 2	59	80
RP144D	125	80	145	12	130 x 2	59	80
RP144E	125	90	145	12	130 x 2	59	80
RP144B	140	70	160	12	145 x 2	59	80
RP144C	140	80	160	12	145 x 2	59	80
NEW! RP144G	140	90	160	12	145 x 2	59	80
RP145	150	70	179	12	155 x 2	69	90
RP145A	150	80	170	12	155 x 2	69	90
RP146	160	80	180	12	165 x 2	69	90
RP146A	160	90	180	12	165 x 2	69	90
NEW! RP146B	160	100	180	12	165 x 2	69	90
RPCG30180100	180	100	210	18	188 x 2.5	58	92
RPCG30180120	180	120	210	18	188 x 2.5	58	92
RPCG30200100	200	100	218	18	208 x 2.5	58	92
RPCG30200120	200	120	218	18	208 x 2.5	58	92
RPCG30250120	250	120	268	18	258 x 2.5	80	117
RPCG30250150	250	150	268	18	258 x 2.5	80	117

* = ALUMINIUM UNI 2011-11S / ** = STEEL 11SMn30 +NI TEMPER